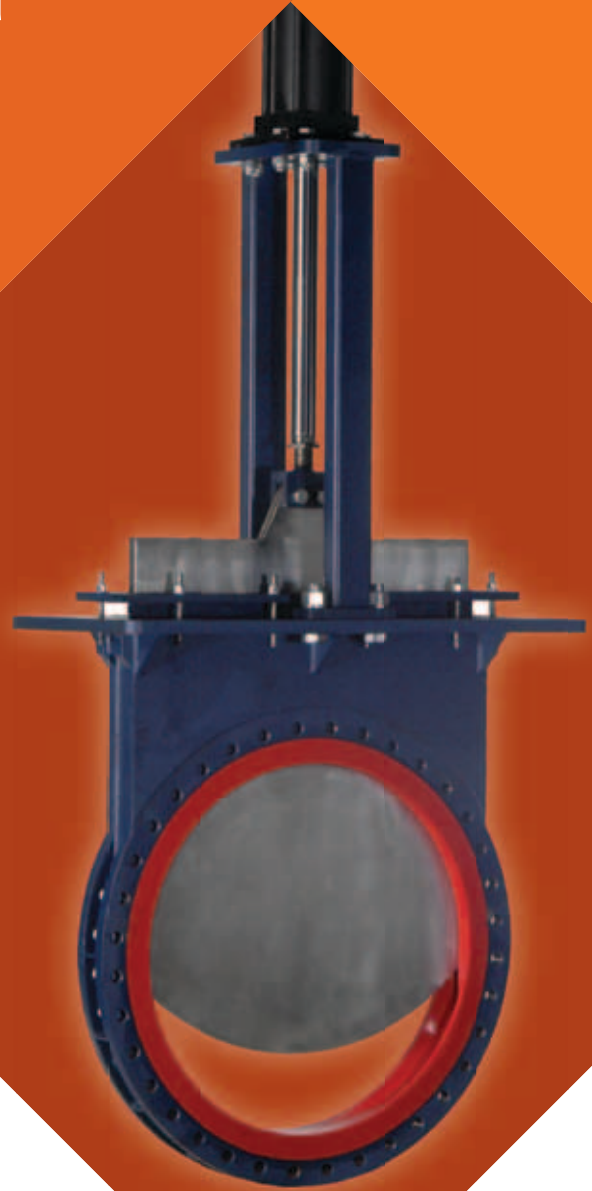


Fabri-Valve®

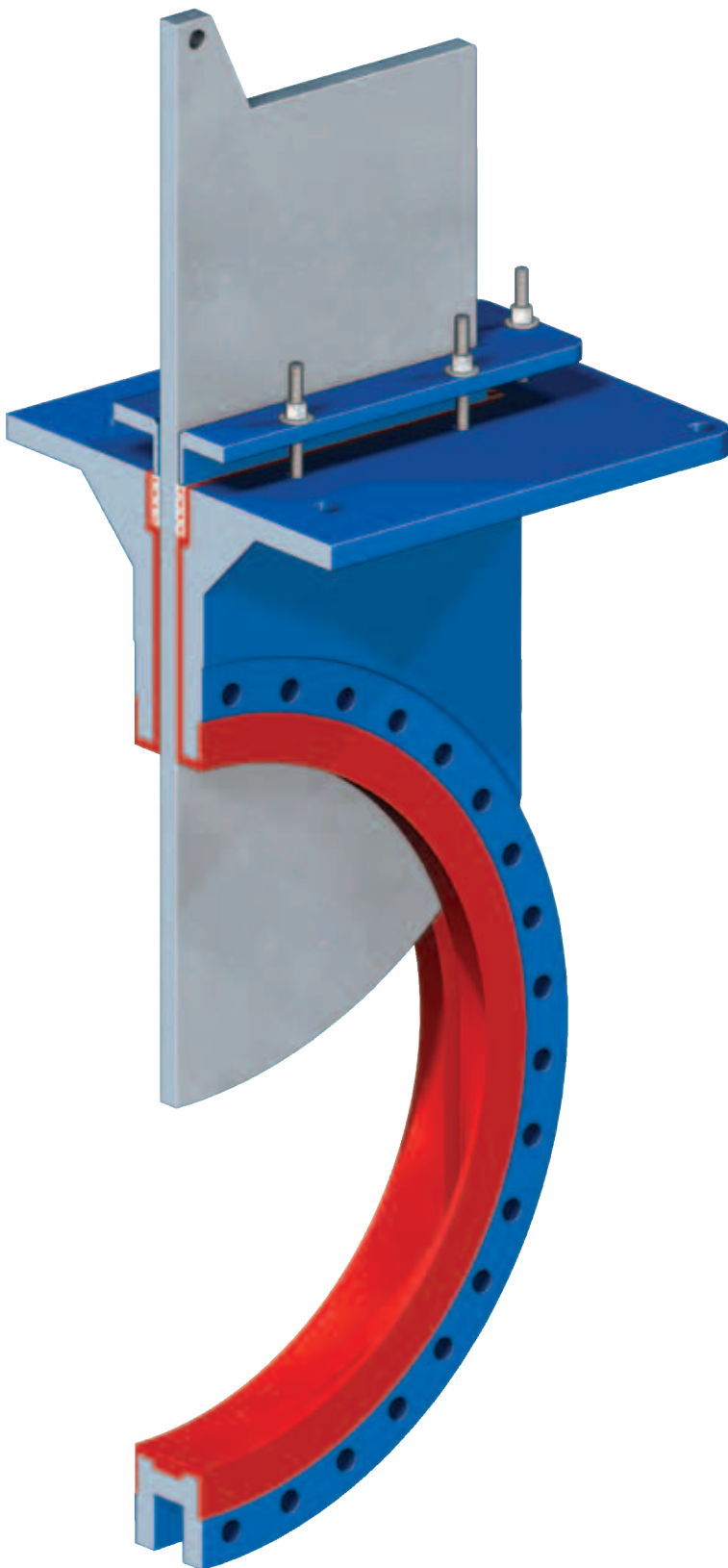
S16-ULV Urethane Lined
Knife Gate Valve



ITT

ENGINEERED FOR LIFE

S16-ULV Urethane Lined Knife Gate Valve



The Fabri-Valve® S16-ULV Urethane Lined Knife Gate Valve provides an economical solution for abrasive and corrosive applications requiring large diameter valves. The S16-ULV utilizes ITT's perimeter sealing technology that has been utilized for over 20 years. The S16-ULV features a robust perimeter sealing design that provides a no-discharge, bi-directional, drip tight shutoff.

Advantages

- Specifically designed for Gypsum / Limestone Slurry (FGD Applications).
- Zero discharge
- Perimeter sealing
- Smooth bottom (No groove)
- Minimized chest area and close tolerances prevent media packing.
- Ease of Installation:
- Does not require load distribution rings between the valve & mating flanges.
- Performance of the S16-ULV is not affected by the choice of compressible gaskets, variations in the pipe's internal diameter or imperfectly assembled welded pipe flanges.

Design

- Robust gate reduces the possibility of bent or warped gates, which lead to premature valve failure.
- A taper is added to the liner's internal diameter to eliminate the possibility of material collecting at the bottom of the port and preventing proper closure. The taper ensures automatic "clean-out" and "flushing".
- Minimized chest area and close tolerances prevent media packing.
- Urethane liner is chemically bonded to the body providing excellent liner support.
- Unrestricted straight-through flow design provides true full port design.
- Standard actuation includes a 3000 psi heavy duty hydraulic cylinder.
- Lifting eyes in the chest flange aid rigging and installation.
- Standard hydraulic actuation

Specifications

Size Range

30", 36", 42", 48", 54", and 60"
(DN750, DN900, DN1050, DN1200, DN1350,
and DN1500)

Pressure Rating

30", 36" and 42": 110 psig (CWP) maximum
DN750, DN900, and DN1050: 7.6 Bar
48", 54", and 60": 50 psig (CWP) maximum
DN1200, DN1350, and DN1500: 3.4 Bar

Temperature Rating

170°F (77°C) maximum

Flange Drilling

Flange drilling: ASME B16.47 (Class 150 flat face).
Consult factory for alternate flange drilling.

Testing

Every Fabri-Valve® S16-ULV Valve is fully tested prior to shipment. Testing includes a body shell test, a seat leakage test, and a cycling test to insure proper functioning of moving parts. Additional testing is also available. Please let us know your requirements.

Standard Shell test:

Hydro test at 1.5 times the rated CWP (cold working pressure).

- Zero allowable leakage

Standard Seat test:

Hydro test at 15 psi (1 bar) and rated CWP.

- Zero allowable leakage

Available in a Wide Choice of Materials for a Broad Range of Applications

- To meet specific application requirements, a variety of body, yoke and gate materials are offered. Please contact the factory with your specific needs.

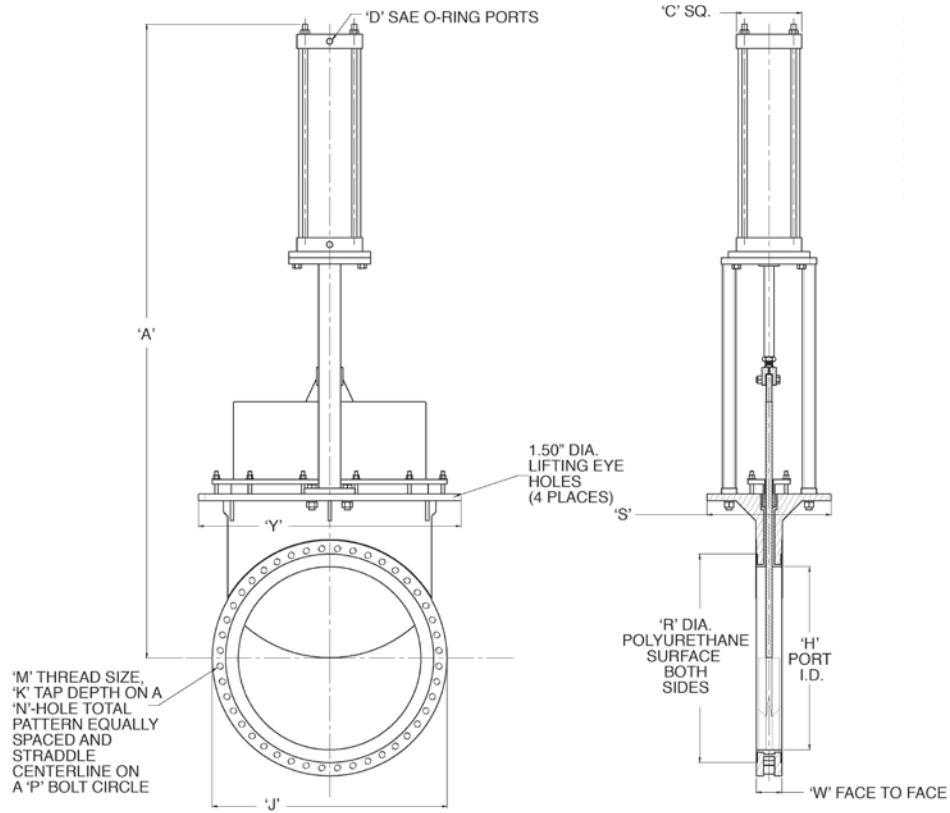
Flow Coefficients

The Cv values below represent the U.S. gallons per minute of 60°F water through a 100% open valve at a pressure drop of 1 psi. The metric equivalent, Kv, is the flow of water at 16°C through the valve in cubic meters per hour at a pressure drop of 1 kg/cm². To convert Cv to Kv, multiply the Cv by 0.8569.

Valve Size	C _v
30	64800
36	93312
42	127008
48	165888
54	209952
60	259200

Available Options

- Actuation
 - Electric operation
 - Bevel gear or hand wheel
 - Other options are available upon request
- Gate Material
 - Other materials are available upon request
- Body, Packing Gland, & Yoke Materials
 - Other materials are available upon request
 - Self supporting yoke
- Lockouts
 - Gate lockable in the open and closed position
- Limit switches and positioners
 - Custom per customer's requirements
- Alternate flange drilling
 - Others available upon request



VALVE SIZE		Dimensions for S16 - Inches (mm) - with Hydraulic Cylinder													
IN	DN	A	C	D	H	J	K	M	N	P	R	S	W	Y	CYLINDER BORE
30	750	105.38 (2677)	6.50 (165)	1 1/16-12	29.25 (743)	38.75 (984)	1.27 (32)	1 1/4 - 7 NC	28	36.00 (914)	33.25 (845)	20.00 (508)	5.25 (133)	41.75 (1060)	5
36	900	124.00 (3150)	7.50 (191)	1 3/16-12	35.25 (895)	46.00 (1168)	1.27 (32)	1 1/2 - 6 NC	32	42.75 (1086)	39.75 (1010)	24.00 (610)	5.50 (140)	49.00 (1245)	6
42	1050	141.25 (3588)	8.50 (216)	1 5/8-12	41.25 (1048)	53.00 (1346)	1.40 (35)	1 1/2 - 6 NC	36	49.50 (1257)	46.50 (1181)	28.00 (711)	5.75 (146)	56.00 (1422)	7
48	1200	156.69 (3980)	7.50 (191)	1 3/16-12	47.25 (1200)	59.50 (1511)	1.27 (32)	1 1/2 - 6 NC	44	56.00 (1422)	53.00 (1346)	20.00 (508)	5.25 (133)	61.00 (1549)	6
48	1200	158.38 (4023)	8.50 (216)	1 5/8-12	47.25 (1200)	59.50 (1511)	1.27 (32)	1 1/2 - 6 NC	44	56.00 (1422)	53.00 (1346)	24.00 (610)	5.50 (140)	62.00 (1575)	7
54	1350	174.38 (4429)	8.50 (216)	1 5/8-12	53.25 (1353)	66.25 (1683)	1.27 (32)	1 3/4 - 5 NC	44	62.75 (1594)	59.00 (1499)	22.00 (559)	5.50 (140)	69.00 (1753)	7
60	1500	191.13 (4855)	8.50 (216)	1 5/8-12	59.25 (1505)	73.00 (1854)	1.52 (39)	1 3/4 - 5 NC	52	69.25 (1759)	65.50 (1664)	24.00 (610)	6.25 (159)	75.00 (1905)	7



ENGINEERED FOR LIFE

Engineered Valves, LLC
 1110 Bankhead Ave
 Amory, MS 38821
 662.256.7185
 www.engvalves.com

© 2012 ITT Engineered Valves, LLC

Form S16-ULV